

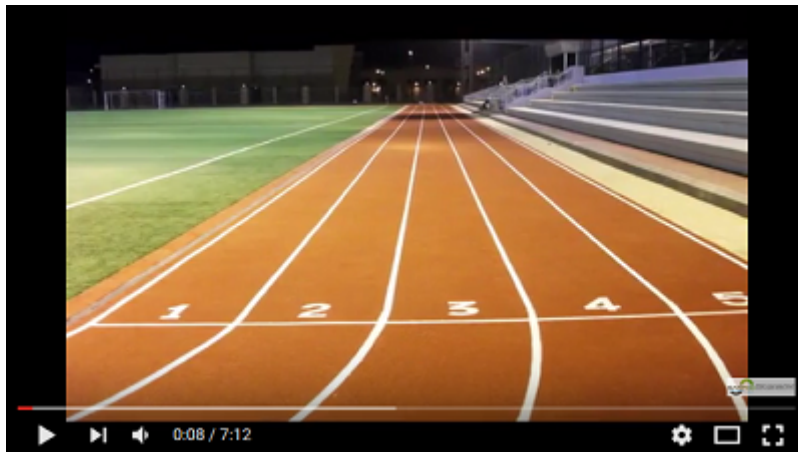
# Floor Covering Media

Your Gateway to the Floor Covering Industry

## Reliable supplier of industrial rubber surfaces



[This family-owned company](#) with roots in Saudi Arabia and operations all over the Middle East and GCC was founded in 1994. In 2006, this supplier was made part of their parent company, Rashid Saad Al Rashid & Sons Group.



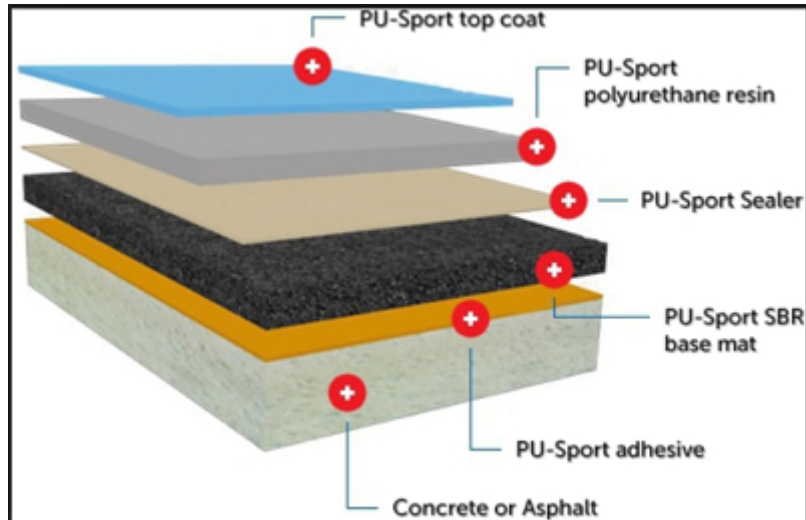
[Sarpco Video](#)

May 29, 2016

Sarpco pioneered the industrial rubber and the safety flooring industry over two decades ago. Few, if any, suppliers possess hands on experience at the level of Sarpco's team. Get the best industrial rubber products and safety sports flooring systems for the best value. Choose from any of the top ASTM tested & rated performance and safe play surfaces in the industry. This supplier is the first company based in Saudi Arabia to be awarded the certificate of approval from the IAAF, for completing an olympic running track according to IAAF standards for the olympic games.

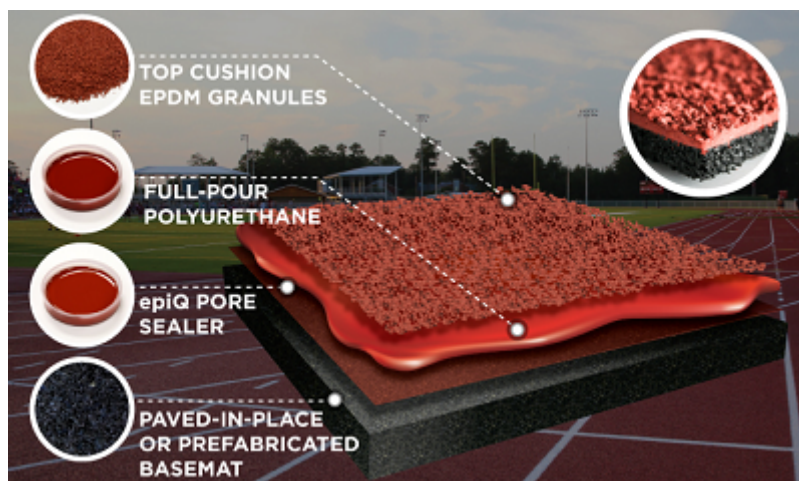
# Floor Covering Media

Your Gateway to the Floor Covering Industry



[Sarpco Ball Game Courts \(BS\)](#) are for handball and multi-purpose halls. Sarpco BS 10+2 is comprised of an elastic layer, applied directly on site using a special finisher. It is certified for DIN 18032/2, EN 14904, Certification IHF and FIBA (International Handball Federation and International Basketball Federation). This product is a top class elastic polyurethane sport surface designed for multipurpose sports halls, school gyms, specialized tennis courts and gymnastic halls. It can be used for any ball games.

Pigmented top coating  
Pigmented self leveling  
Pigmented pore sealer  
Rubber bonding mat  
Primer  
Asphalt /concrete substrate



[Sarpco's SW \(sandwich types system\)](#) is comprised of an elastic layer applied directly on site using a special finisher. This is certified for DIN 18035/6, Type D and is IAAF certified. The elastic layer is PUR/ recycled granulate and poured. The closing layer is also a poured layer topped with color granulate EPDM. The product is water impermeable. Recommended applications include tracks and other high quality sporting surfaces. The thickness ranges from 13-15mm.

Sarpco Sandwich System

# Floor Covering Media

Your Gateway to the Floor Covering Industry

---

EPDM Granule (1-4mm)  
Pigmented self-leveling layer  
Pigmented pore sealer  
10mm rubber granule mat  
Primer  
Asphalt/concrete sub-base

Floor Covering Media publishes Press Releases called Flooring Updates.

## Flooring Updates



*FlooringMedia 1*

---

## Flooring Network

For those in the market and those that serve it

Floor Covering Media, a business network serving the floor covering industry, provides readers timely, objective news and information about flooring topics.

## Floor Search

Answers to Questions About Flooring

Readers may conveniently retrieve this timely, objective news and information at [Floor Search.info](http://FloorSearch.info), which is Floor Covering Media's public search engine.