

# Floor Covering Media

Your Gateway to the Floor Covering Industry

## Transit Surfaces



What's the best surface for a bus and other types of mass transit vehicles? While some buyers find the standard transit surface an acceptable one, other buyers upgrade. Why pay more? It is an investment in *ease of maintenance* and *safety*. It isn't a top coated surface. It's patented construction includes: *aggregates of quartz and diamond hard silicon carbide*; blended throughout the entire floor. This transit surface is *slip resistant*, *durable* and *easy to clean*.



It is a next generation surface. It's ideal for buses and other transit vehicles:

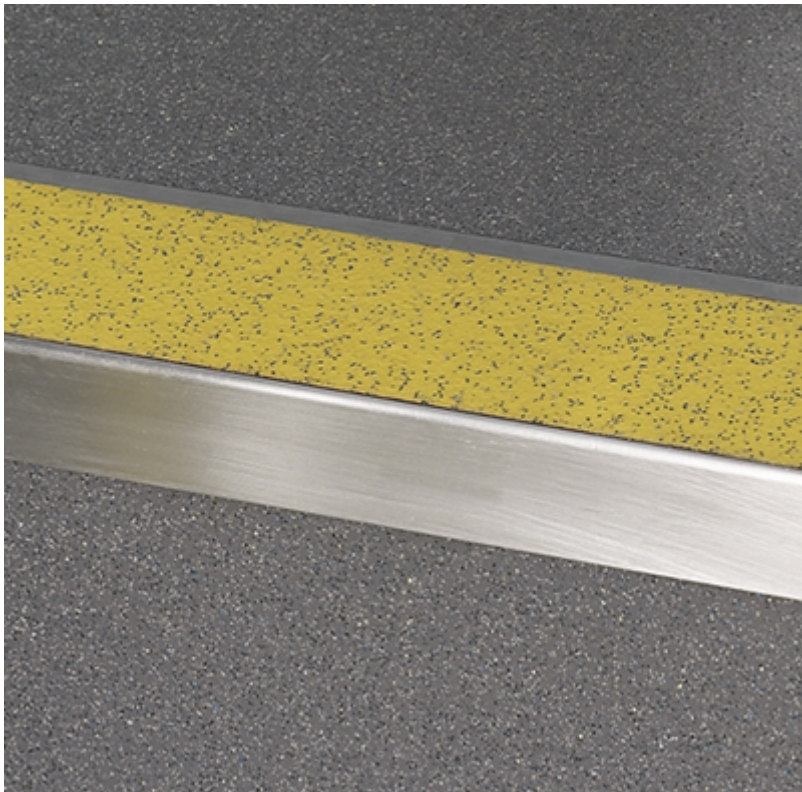
# Floor Covering Media

Your Gateway to the Floor Covering Industry

---



It's wet and dry slip resistance is well above and beyond the ADA standards, and which can aid in slip and fall prevention. Its bacteriostatic component addresses safety concerns about growth or reproduction of harmful bacteria and microorganisms found on transit surfaces. This isn't an uncommon concern and an appealing feature in a transit surface! Easyclean stain resistant technology simplifies the dreaded cleaning and maintenance tasks, which are typically associated with most (if not all) types of transit surfaces.



Naturally concerned about your carbon footprint? This transit surface contains post-consumer recycled content. It's an environmentally responsible decision.

# Floor Covering Media

Your Gateway to the Floor Covering Industry

## Technical summary

Newly enhanced, this lightweight chip-free bus floor combines improved strength and durability with excellent slip resistance for high performance, simplicity and practicality.

<b>Type of product:</b>	Roll, kit, or self-adhesive kit
<b>Slip resistance:</b>	PTV $\geq 36$
<b>Thickness:</b>	2.2mm or 2.7mm
<b>Warranty:</b>	2.2mm 12 years 2.7mm 15 years
<b>No. of colors:</b>	8
<b>Weight:</b>	2.2mm: 4.05lb/sy $\pm 10\%$ 2.7mm: 4.98lb/sy $\pm 10\%$

[View all technical documents](#)

It is not a heavy surface material, which is likely to reduce fuel costs. It's wear resistant, durable and retains the appearance and performance for the life of your floor. The seams are heat welded, which prevents damage to the sub-floor and obviates the necessity for unsightly seam moldings. Its dual glass fiber scrim provides this transit surface an exceptional strength, an impressive flexibility and dimensional stability. Where is this transit surface warehoused? In North America! Accessories are available as well: moldings, step nosings, adhesives, sealants, weld rods, caulking, installation tools, maintenance supplies and more. Warrantee? 12-years! Available at all OEM's! Learn more:



Floor Covering Media publishes  
press releases called Flooring Updates.

# Floor Covering Media

Your Gateway to the Floor Covering Industry

---

## Flooring Updates



*FlooringMedia 1*

---

## Flooring Network

For those in the market and those that serve it

Floor Covering Media is  
a social media network.

## Floor Search

Answers to Questions About Flooring

Retrieve timely, objective news and  
information at <https://www.floorsearch.info>.